



New Student Guide

SINGAPORE

ehl.edu

Welcome to EHL Campus (Singapore)



Congratulations
on your decision to study at EHL Campus (Singapore)!

Very soon, you will be embarking on a great adventure to create amazing memories and lifelong bonds with your fellow EHL students. We encourage you to open your mind and heart to all the opportunities and discoveries that EHL Campus (Singapore) has to offer. We are confident that the learning and life experience will meet your highest expectations.

We look forward to welcoming you to the EHL family!

Jenny Ang

Managing Director

Table of Contents

Summary



The Countdown to EHL	5
Finalize Your Acceptance	8
Join the Community	9
Your Student Pass (Visa)	11
Complete Your Enrollment	15
Orientation Week	29
Life in Singapore	33
Campus Guide	69

The Countdown to EHL Campus (Singapore)

We are looking forward to welcoming you on EHL Campus (Singapore). Here are the things you must do to prepare for your arrival on campus.

STEPS	TIME UNTIL START DATE	KEY RESOURCES	YOUR TASKS
Pre-Course Counselling	6-9 months	<ul style="list-style-type: none">• Your EHL email address• Pre-Course Counselling webpage	<ul style="list-style-type: none">• Review provided information• Return the documents signed:<ul style="list-style-type: none">- Student Contract- Advisory note- Pre-course Counselling Checklist
Enrollment	2-3 months	<ul style="list-style-type: none">• Your EHL email address• Solar+	<ul style="list-style-type: none">• Choose language class• Apply for Student Pass• Undergo medical check- up
Invoicing	2 months	<ul style="list-style-type: none">• MyEHL portal	<ul style="list-style-type: none">• Pay the invoice• Receipt of the Fee Protection scheme certificate
Preparations	2-4 weeks	<ul style="list-style-type: none">• EHL Arrival Newsletters• MyEHL portal• Student Affairs Contact	<ul style="list-style-type: none">• Keep in touch• Pack your bags• Plan your trip to EHL Campus (Singapore)
Arrival	Your Start Date + Orientation Week	<ul style="list-style-type: none">• Orientation Week• Campus Guide	<ul style="list-style-type: none">• Arrive• Orientation Week Schedule


EHL
Campus (Singapore)



Finalize Your Acceptance

You have been accepted to EHL Campus (Singapore), but your place is not reserved until you have completed the following steps:



ATTEND THE PRE-COURSE COUNSELLING SESSION

You will receive an invitation from Student Affairs to attend the Pre-Course Counselling. This is mandatory.



SIGN YOUR DOCUMENTS

Following the Pre-Course Counselling session you will receive three documents, to be reviewed, and returned duly dated and signed: the Advisory Note, the Student Contract and the Pre-Course Counselling checklist.

The student contract is an important legally binding document between EHL Campus (Singapore) and its students. Please read it thoroughly before signing it. Once signed, you have a 7-day cooling period.

Both local and international students admitted to EHL Campus (Singapore) must sign and submit the student contract before proceeding with their enrollment process.

Do not hesitate to contact **Student Affairs** sta.sg@ehl.ch should you have any question or comment regarding the terms of the student contract.

Further information regarding the student contract can also be found on the CPE website at the following address: www.ssg.gov.sg



To connect with other new students in your class, join the new student group for your graduation year (Ex. You start in 2021, look for the group for EHL Class of 2025). These groups are run by current students who will answer your questions and post interesting updates.

On social media, update your profile to include EHL as your new school, and Singapore as your new residence or location. This will ensure you get all of the latest news and start meeting friends from EHL right away.

EHL Social Media Channels



@ehl.singapore



[@ehl.singapore](#)



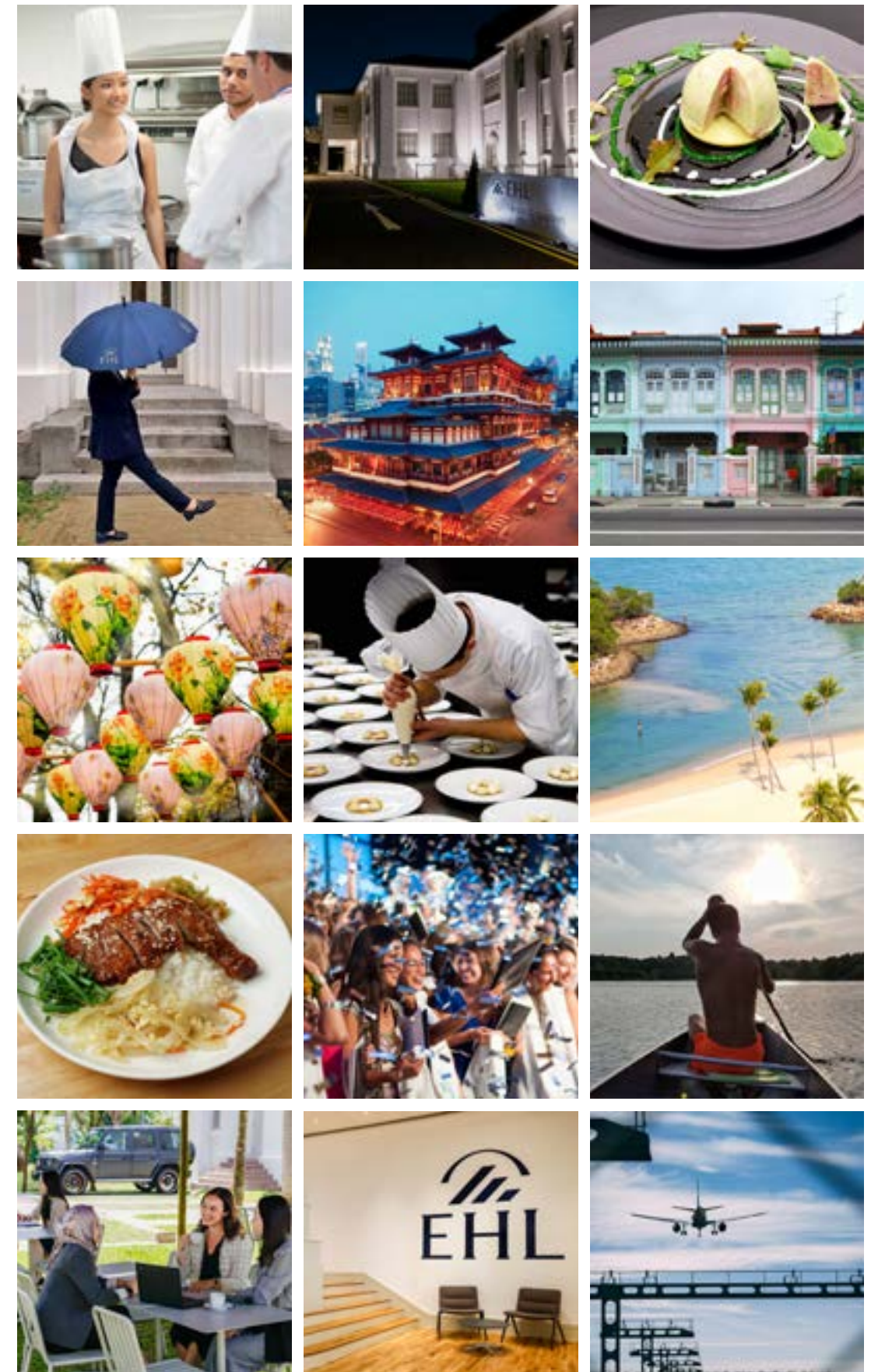
[@EHLnews](#)



EHL – Ecole hôtelière de Lausanne



EHL - Ecole hôtelière de Lausanne



Your Student Pass (Visa)



International students will need a Student Pass to be allowed to study at EHL Campus (Singapore).

Our Student Affairs team will support you throughout the Student Pass application process.

You can work during the school term without a work pass if you meet all of the following criteria: You are a full-time matriculated or registered student in one of the approved institutions, you hold a Student Pass issued by the Immigration and Checkpoints Authority (ICA).

Additionally, your work needs to meet one of these requirements: It is for a maximum of 16 hours a week, it is under an industrial attachment programme conducted by your university or educational institution, the industrial attachment can be either compulsory or elective but it must contribute towards your graduation requirements.

Student pass holders are expected to have a minimum attendance rate of 90%.

Student Pass Application

Step 1: Prepare the required documents.

Assemble the documents as required by the Immigration and Checkpoints Authority and verify whether you are coming from a visa-required country.

Step 2: Apply for the Student Pass.

Our Student Affairs team will provide you with your Student Pass Application number. You will use it to submit your application together with the required documents from step 1.

Step 3: Receive the Student Pass.

Our Student Affairs team will monitor the status of your Student Pass application (processing time is 2 to 4 weeks on average, some applications can take a longer time) and guide you through the next steps of the Admissions process.

Once your student pass application is approved, we will send you a copy of the In-Principle Approval Letter (IPA) issued by the Immigration and Checkpoints Authority (ICA). This letter will serve as an entry visa to Singapore if you are from a visa-required country.

Step 4: Finalize your admission.

Following the issuance on the In-Principle Approval Letter, we will then issue your first invoice for the course.

We will contact you for your choice of meal and accommodation plan, health insurance and other logistical matters.

Upon receipt of your payment, we will finalize your set-up in the School systems and prepare your student card. Within 7 working days following the invoice payment, you will receive your Fee Protection Scheme.

Step 5: Travel to Singapore.

You will start your course with the Orientation Week, where we will provide you further information about your new environment at school and in Singapore.



QUESTIONS?

If you have any questions regarding the visa process, contact the Student Affairs team sta.sg@ehl.ch.

Immigration and Checkpoints Authority [website](https://www.ica.gov.sg/).

Complete your Enrol- ment

If you are coming as a Direct Entry student, you will need to complete several administrative tasks, which are mostly done through EHL's online portals.

If you joined EHL for Preparatory Year, please skip to page 24.



Complete Your Enrolment

YOUR EHL EMAIL ADDRESS

An EHL university email account will be created for you as follows: **firstname.lastname@ehl.ch**

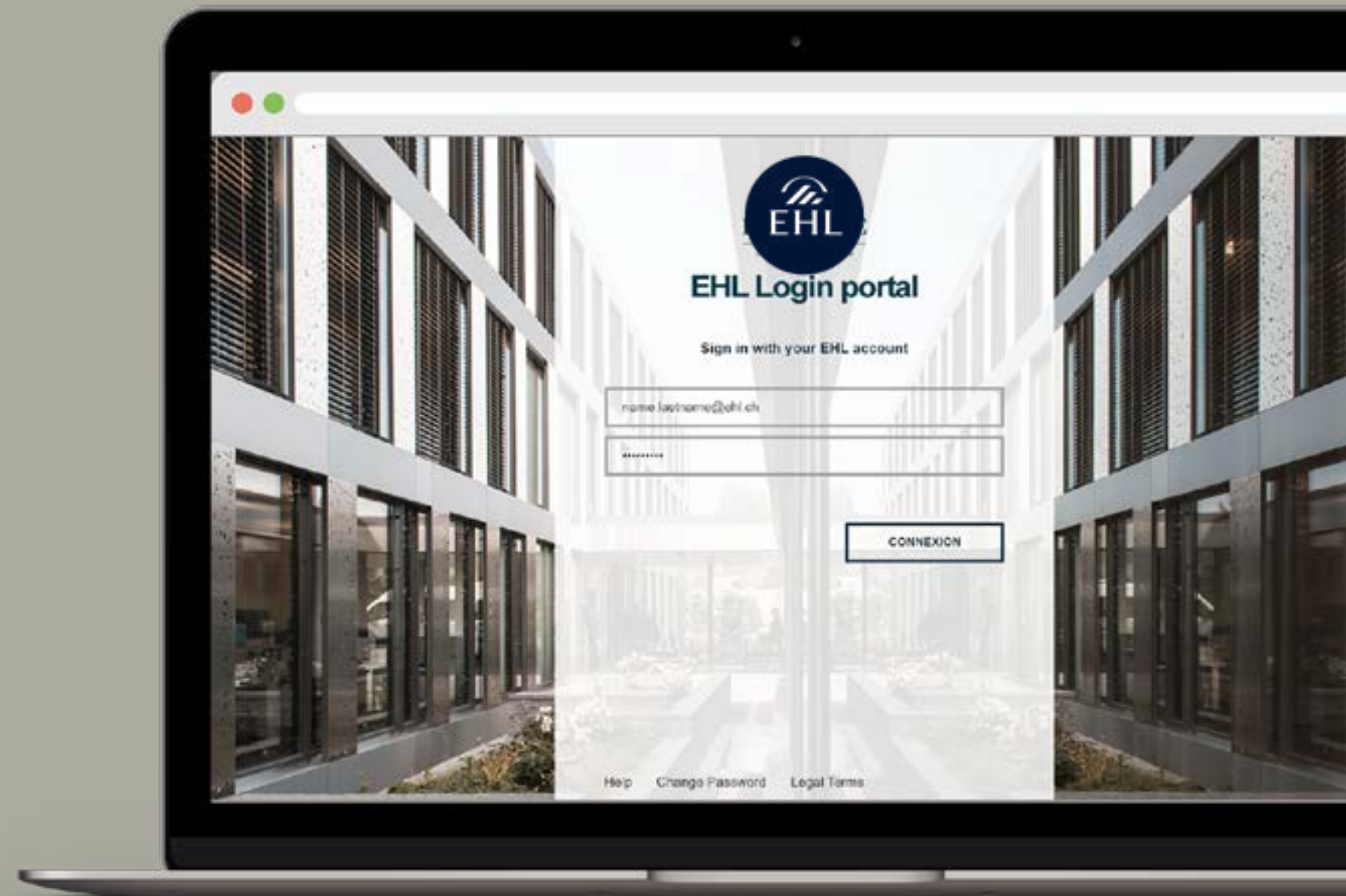
EHL staff will use this email to communicate with you, so don't forget to check this email address regularly, starting from the time you activate your account.

If you forget your password or cannot login, the IT helpdesk can help you: itsupport@ehl.ch

ENROLMENT MANAGEMENT MODULE (EMM)

Approximately four months before your program starts, you will receive an email inviting you to click on a link to enter the Enrollment Management Module (EMM), it's like the online application. Make sure you use this portal to complete the required steps such as:

- Send medical documents
- Declare special needs
- Send measurements for uniforms
- Prepare your laptop



MYEHL - YOUR STUDENT PORTAL

This is your personal student portal for non-academic topics where you will find everything you need to know before you arrive: myehl.edu

- New Student Hub (a virtual guidebook)
- News & Events
- And much more...

Before your arrival, please check the posts there to make sure you are well informed. You will receive access to the Learning Management Portal and EHLISA, which are the academic student portals.



Enrolment FAQs

DO I NEED HEALTH INSURANCE?

Health Insurance: Health insurance is mandatory in Singapore, if your private health insurance doesn't cover your needs in Singapore EHL will propose an adequate coverage.

WHAT ABOUT MEDICAL ISSUES & SPECIAL NEEDS?

A First Aid Responder will be available on campus, and there will be access to medical services outside of campus. On the Enrollment Management Module (online), you will be asked to send medical documents. You will also find details and contact information for the following topics:



Special Needs: If you have any special needs for academic or physical adaptations, then you should send a physician's report explaining your condition and the requirements.



Allergies: If you have any severe allergies, this should be indicated in your medical documents.



Emergency Pharmacy: The Medical Services team sells a pre-packed pharmacy kit with all the basic medications and first-aid items you might need for small ailments such as headaches, colds, stomach aches and small cuts and bruises.



Medications: If you require prescription medication, then you should contact the Student Services team to discuss your prescriptions. Some substances are outlawed in Singapore due to their addictive or psychotropic nature. In case any prescription of yours has such ingredients, you need to apply for an official import permit, at least two weeks before your planned date of arrival.

How to find accommodation?

EHL Campus (Singapore) provides accommodation support through arrangements with local providers. We will reserve a number of studios and shared apartments for our students in one or more apartment complexes, enabling students to live in proximity to each other. Shuttle transportation between the campus and conveniently located pick-up points will also be arranged by EHL Campus (Singapore).

Students choosing to live in these apartments should budget approximately 1'500 - 2'500 SGD per month for accommodation, depending on the size of the apartment chosen, and their budget. Students also have the option of choosing their own accommodation in Singapore. It is not mandatory to live in apartments arranged through EHL Campus (Singapore).

HMLET CANTONMENT

Hmlet Cantonment offers a dynamic, boutique co-living experience in a great location. Conveniently located right in the heart of Singapore's CBD and in walking distance to Tanjong Pagar and Outram MRT Subway Stations as well as 10 to 15 minutes to the popular Marina Bay, Orchard and Sentosa by car or public transport.

 **Rooms Offered:** Fully equipped private rooms ranging in size from 14m² - 26m², providing access to Hmlet Cantonment facilities such as communal kitchens, wellness studio (with in-house yoga instructors), plunge pool and community events!


 **Location:** 150 Cantonment Road, Singapore 089762

 **Nearest MRT:** Tanjong Pagar, Outram Park

 **Website:** www.hmlet.com/cantonment

HMLET PORTOFINO

Hmlet Portofino offers hassle-free, contemporary co-living experience in a residential hot spot, near the Newton Food Centre and malls in Novena. Hmlet@Portofino houses its own rooftop, lounge, and pool as common spaces for members to use.

 **Rooms Offered:** Fully equipped private rooms including Regular (single bed, shared bathroom), Junior Master (double bed, private bathroom), Master (double occupancy, private bathroom) and 2-bedroom apartments. All providing access to Hmlet Portofino facilities.

 **Location:** 6 Sarkies Road, Singapore 258126

 **Nearest MRT:** Newton (4min walk, 280m)

 **Website:** www.hmlet.com/en/singapore/orchard/portofino

LYF FUNAN

Lyf Funan redefines the apartment living experience with well-designed social spaces for a diverse and dynamic community of travellers and locals. Located near City Hall MRT Station, it is close to many entertainment attractions and iconic landmarks.

 **Properties Offered:** Apartment ranges from One of a Kind (Studio) to All Together (6- Bedroom Duplex)

 **Location:** 67 Hill St, Level 4 Funan Mall, Singapore 179370

 **Nearest MRT:** City Hall/Clarke Quay

 **Website:** www.lyfbyascott.com/en/properties/sg/lyf-funan.html

YO:HA HOSTELS

Under the yo:HA brand, we are the largest hostel management provider and with a strong foothold (gained over the years) in partnering with major private education institutions and autonomous universities in providing premier living environment for students. Today, yo:HA runs 4 hostels which are in various locations across Singapore, offering different room configurations that best cater to our students' needs.


 **Rooms Offered:** Single-sharing to six-sharing with communal facilities such as pantry and gym.

 **Location:** Henderson, Evans Road, Pearl's Hill and Woodlands

 **Website:** www.yoha.com.sg

FIGMENT

Figment offers a refreshing take on co-living within Singapore's busy urban landscape with their boutique shophouses. Thoughtfully curated and design-forward, their homes successfully adapt the traditional shophouse into modern living spaces with a distinct sense of place - celebrating the best of Singapore's built heritage and local design talent. Handpicked across neighbourhoods with unparalleled street-level ambience, plug yourself into vibrant locales with great access to the CBD, local food markets and heritage establishments.

 **Rooms Offered:** Your very own fully-furnished suite in a boutique shophouse, with your own en-suite bathroom and full kitchenette. Shared access to facilities such as lounge areas, full gourmet kitchen, pool and rooftop.


 **Location:** 126 Emerald Hill, 36 Petain Road


 **Nearest MRT:** Orchard, Farrer Park

 **Website:** www.figment.live

CP RESIDENCES

Make short-term urban co-living affordable, accessible and awesome for the modern global traveler. Our locations are chosen with the spirit of being the "centre point" of lifestyle-living in mind, each unique property is a nexus of activity, gives you proximity to the city, and our pulsating network of lifestyle offerings. We bring the comfort of a home to you together with cleanliness, safety and convenience. Amenities and facilities that you need either within your compound or just minutes away by foot. Here, personal privacy beautifully co-exists with social space.

 **Properties Offered:** From fully-furnished studios, executive rooms to 3-bedroom suites, the choices are extensive. Shared access to facilities such as lounge areas, a fully-equipped kitchen and pool.

 **Location:** 176A Orchard Rd, The Centrepoint, Singapore 238844

 **Nearest MRT:** Somerset, Dhoby Ghaut

 **Website:** www.cpresidences.com/

SHANGRI-LA APARTMENTS

As part of the Shangri-La Hotel group, renowned for true hospitality, it is no wonder Shangri-La Apartments continue to be amongst the most sought-after accommodation choice for individuals and families alike, fulfilling expectations and beyond. Blending thoughtful layouts with enticing recreational options, residents at Shangri-La Apartments enjoy privileged access to all the facilities & services of the Hotel, including signing privileges at the Hotel's award-winning restaurants and bars. EHL Students can enjoy contracted dining discounts at selected Shangri-La Hotel Singapore F&B outlets and 15% discount on CHI, The Spa treatments.

 **Rooms Offered:** 1 - 3-bedroom apartments

 **Location:** 1 Anderson Road, Singapore 259983

 **Nearest MRT:** Orchard

 **Website:** www.shangri-la.com/singapore/shangrilaapartment/

What to Pack

The following list covers many of the common items students need for daily life on campus. If you are travelling by plane, you may want to purchase heavy/bulky items here in Singapore.



Business Attire

- Business outfits are required on campus.
- Please refer to this webpage ehl.edu/en/life-at-ehl



Outdoor Attire

- Warm, water-resistant coat compatible with business attire
- Non-slip boots or shoes for rain
- Umbrella



Sports & Casual Attire

- Indoor and outdoor sports wear
- Casual wear: jeans, t-shirts, sweats, etc.
- Comfortable sleep attire, slippers, etc.
- Evening wear for parties and going out.
- A good pair of sunglasses (it's quite bright here!)



Miscellaneous

- Study items, notebooks, pens, highlighters, etc.
- Photos and small decorations for your room
- Laundry bag, detergent, stain remover
- Grooming: Lint brush & mini sewing kit



Electronics

- Medical thermometer
- Electrical plug adapters for Singapore*
- Hairdryers, electric razors/clippers
- Flashlight or book light
- Phone and electronic chargers
- Portable charger
- Noise-cancelling headphones or earplugs



Personal Items

- Shower caddy and storage for toiletries/make-up
- Soap, shampoo etc. (May be better to purchase here)
- Bathrobe and bath sandals
- Medications
- Washcloths

**In Singapore the standard voltage is 230 V and the frequency is 50 Hz. You can use your electric appliances in Singapore, if the standard voltage in your country is in between 220 - 240 V (as is in the UK, Europe, Australia and most of Asia and Africa). If the standard voltage in your country is in the range of 100 V - 127 V (as is in the US, Canada and most South American countries), you need a voltage converter in Singapore. You can also consider a combined power plug adapter/voltage converter.*



Arriving at EHL Campus (Singapore)

You will be expected to arrive during the official registration day as indicated in your acceptance email.

You will also receive newsletters from the campus with instructions for parking and registration before your start date. Please make arrangements to arrive on that day, during the opening hours.

 The campus address is: EHL Campus (Singapore),
3 Lady Hill Road, Singapore 258672

ARRIVING EARLY

If you are coming from far away and/or have a long flight or trip to get here, then you should plan to arrive the day before and stay overnight in a hotel.* A list of hotels is provided in this guide.



ARRIVING BY PLANE

Singapore's international airport is the Singapore Changi Airport. To travel to the campus from the airport, you have different options.

You will receive more details about the process for arrival and registration a few weeks before you arrive. For more information about hotels and transportation, see the Life in Singapore section of this guidebook.



During the first week on campus,
you will be in good hands. Our
teams of staff and students will be
here to welcome you and introduce
you to the campus, so don't stress!



Oriental- tion Week

Registration & Check-in

When you arrive on campus, you will go through a registration process and receive your student card. You will also receive a schedule of events for the week, with a checklist of things you must do.

Orientation Activities

The first week is a very busy time with presentations about your program, student services and much more, plus a campus tour. You will also be invited to ice-breaker events and have a chance to get to know your fellow students and join the sports & social committees.



Life in Singapore



Key Facts



Singapore is an island City-state



Size: 682.7 square kilometers



5.6 million inhabitants



17M international tourists yearly



75,000 international students



25-32°C year-round



One-third international residents



Four official languages:
English, Malay, Mandarin, and Tamil

Apps

Here are some useful apps that you can download on your phone.

Communication: Telegram, Whatsapp

Taxis: Gojek, ComfortDelGro

Multi-functional: Grab (taxi booking, food delivery, mobile payment and more)

Public transport: Explore Singapore MRT Map, bus@sg and Citymapper

Weather: Weather@SG, MyEnv

Shopping: Shopee, Zalora, Lazada, Fave (special deals)

Entertainment: Popcorn, Culture Trip

Food: Chope, Burpple, Deliveroo, Foodpanda

Covid tracing: TraceTogether

Miscellaneous: NLB Mobile (digital library), LalaMove (mover service), DBS PayLah! (payment app)



Banking & Currency

The Singapore Dollar is the official currency or money of Singapore. The symbol of the Singapore Dollar when written is (\$). 1 Singapore Dollar is divided into 100 cents. There are 2, 5, 10, 50, 100, 1000 and 10,000 dollars notes and 5c, 10c, 20c, 50c, and \$1 coins in use.

Most major credit and debit cards (Visa, Mastercard, AMEX, Maestro, Cirrus, etc.) can be used to withdraw cash at ATMs and pay

in stores. When using a card on a foreign account, you will be charged based on the daily exchange rate for Singapore Dollars and you may have some charges for international transactions. Some services still accept cash only (restaurants, taxis, street vendors, etc.) so it is good to keep some cash on hand. Brunei currency is on par with Singapore currency, so it is readily accepted as well.



Singlish

It is true that most Singaporeans speak English, as it is the language of education and administration. However, colloquial Singaporean English (Singlish for short) sounds nothing like 'Standard English' to foreigners. Singlish takes its influences from the four official languages: Malay, Mandarin, English and Tamil; creating a language that is unique and unmistakable.

Here are some resources that will help you get ready to communicate like a true Singaporean:

<https://thehoneycombers.com/singapore/singlish-101/>

<https://sites.northwestern.edu/studyabroadblogs/2018/09/14/navigating-singlish-as-an-english-speaking-foreigner/>

<https://theculturetrip.com/asia/singapore/articles/a-guide-to-singapores-languages/>

<https://www.timeout.com/singapore/things-to-do/common-singlish-words-you-need-to-know-to-speak-like-a-local>





Mobile Phone Service Providers & Plans

Singapore has a well-established telecommunications infrastructure that spans the entire city-state, with high mobile phone penetration and excellent service coverage for most parts of the island. There are 3 main telco operators in Singapore – Singtel, Starhub and M1 (or MobileOne). For mobile phone services, there are 2 main plans to choose from: pre-paid or post-paid.

MOBILE PRE-PAID OPTIONS:

- Rapid set-up
- Freedom from binding contracts
- Pre-paid SIMs can be purchased in stores island-wide
- Conveniently top up via internet banking, ATM machines, or retail outlets

MOBILE POST-PAID OPTIONS:

- Contract for a fixed period of time
- No large discrepancies in pricing between telcos
- Variable amounts of data provided
- Requires your passport, student pass, and proof of address (e.g. utility bill).

Source: [Goodmigration](#)

Cost of Living

From the local hawker centre to luxury stores and rooftop bars over 5-star hotels, the cost of living in Singapore is relative to the spending habit of each individual. Based on the Numbeo Cost of Living Comparison Engine, we handpicked a few that might be of interest for international students:

1 pair of jeans (Levis 501 or similar)	SGD \$96
1 summer dress in a High Street Store (Zara, H&M or similar retailers)	SGD \$51
1 min. of prepaid mobile tariff (no discounts or plans)	SGD \$0.20
Cappuccino in Central Business District	SGD \$6
Monthly ticket public transport	SGD \$120
2 tickets to the movies	SGD \$24
1 plate of chicken rice in hawker centre	SGD \$3.50

TIPS FOR SAVING MONEY:



- Keep your student card with you at all times, you may get discounts on food and entertainment.
- Shop for good deals at warehouses, sales, second-hand stores and markets.
- Taxis are costly, so avoid them if possible. Often, public transportation will get you there just as fast.



Guides to Singapore

There are hundreds of food, travel and lifestyle bloggers in Singapore, but these have a broad coverage of food, activities, and shopping in the city:

Mitsueki, lifestyle blog: mitsueki.sg

The Smart Local, for lots of things to do: thesmartlocal.com

District 65, food and local insights: districtsixtyfive.com

WorkingwithGrace: award-winning business lifestyle blog: workingwithgrace.wordpress.com

Georgia Caney, British expat living in Singapore: georgiacaney.com

Also read our blog on this topic:

[EHL Student Guide to Singapore](#)

[Best Singapore travel blogs by EHL study abroad students](#)

[10 Instagrammable Spots in Singapore](#)

Enjoying Singapore to the fullest:

Singapore is a country of contrasts and diversity, it is important to understand the rules and etiquette that help create a cohesive society. Learn about the do's and don'ts before you arrive on visitsingapore.com





Eating Out

People say that eating is one of Singapore’s great national pastimes, next to shopping. Indeed, the food and beverage scene in Singapore is both endless and amazingly tasty.

Here are some ideas to get you started on your culinary journey exploring Southeast Asian cuisine and modern food concepts.

THE BEST CHAIN RESTAURANTS

Unlisted Collection has 18 properties operating in Singapore, including Burnt Ends: the 10th best restaurant in Asia (according to Asia’s 50 Best List); Meat Smith, an American Smoke House specialized in smoked meat and American BBQ & grill; Restaurant Zen: serving Nordic cuisine with influence from Japan; and Salted & Hung, serving Australian cuisine focusing on minimal wastage.

The Privé Group is a multi-concept brand of hospitality and Food & Beverage offerings with 12 excellent locations in Singapore.

The Lo & Behold Group is a local hospitality group that excels in food that Singaporeans like best. The group owns and operates 12 different outlets and concepts including one of Singapore’s best beach clubs, the Tanjong Beach Club, and Odette the #18 of World’s Best Restaurants.

TOP MUST-TRY DISHES IN SINGAPORE

List courtesy of Claire and Rosemary at the [Authentic FoodQuest](#) blog:

- 1 – **Chili Crab** – The National Dish of Singapore
- 2 – **Hainanese Chicken** – Chicken Rice from Hainan Province
- 3 – **Nasi Lemak** – Famous Malay Local Dish
- 4 – **Otak-Otak** – A Nyonya Cuisine Specialty
- 5 – **Bak Kut Teh** – Pork Rib Soup
- 6 – **Kaya Toast with Kopi** – Singapore’s National Breakfast
- 7 – **Murtabak** – Indian Stuffed Folded Omelette
- 8 – **Biryani** – Aromatic Indian Fried Rice Dish
- 9 – **Roti Prata** – South Indian Flatbread
- 10 – **Fried Hokkien Mee** – Famous Singapore Stir Fried Noodles
- 11 – **Char Kway Teow** – Famous Local Stir Fried Flat Noodles
- 12 – **Pork Satay** – Singapore’s Favorite Late Night Food

Source: [authenticfoodquest](#)

Foodie Resources

Delivery services: Deliveroo, Grab, FoodPanda

Foodie bloggers/vloggers: @foodkingnoc, @timeoutsg & [danielfooddiary](#)

Restaurant reservation/reviews apps: Burpple, Chope

EAT LIKE A LOCAL:

Tipping: it is not customary in Singapore, as establishments automatically add a 10% Service Charge to the final bills. If you would like to reward a staff member for exemplary service, it is best to hand cash straight to the person, otherwise it would go to the business.





Hotels

HOTEL	DESCRIPTION & DISTANCE FROM CAMPUS	PRICE
→ Shangri-La Hotel	A stone's throw away from EHL Campus (Singapore), the Shangri-La Hotel in Orchard is where the legendary Asian hospitality of the Shangri-La brand began. Set amidst 15 acres of lush greenery, it is a place like no other and has been consistently voted as one of the best hotels in the world. 4mins walk, 2mins drive	Approx \$370++ per night
→ The Warehouse Hotel	A beautiful, restored heritage building under The Lo & Behold Group, a local hospitality brand that works closely with EHL. The Warehouse Hotel combines Singapore's rich culture, history and talent, bringing high design and comfort to the banks of the Singapore River in Robertson Quay. 30min public transport, 10min drive	Approx \$410++ per night
→ The Fullerton Hotel	The magnificent Fullerton Building is a grand neoclassical landmark built in 1928. Gazetted in December 2015 as a National Monument, it has now been transformed into a stunning 400-room heritage hotel in the heart of the city. 34min public transport, 16min drive	Approx \$300++ per night
→ Dusit Thani Laguna Singapore	Under the professional leadership of General Manager and our '92 alumni Eric Piatti, Dusit Thani Singapore offers luxurious accommodation, world-class dining, leisure facilities and wellness offerings. Guests have direct access to the Driving Range and the championship golf courses - Classic and Masters. Dusit Thani is a member of our EHL Privilege Program in Singapore. 1h 30mins public transport , 25mins drive	Approx \$280++ per night
→ Parkroyal Collection Pickering	An eco-friendly garden concept hotel in Singapore, at PARKROYAL COLLECTION Pickering, Singapore. With Singapore's CBD and Chinatown at your doorstep, be it a business trip or a weekend staycation, you can count on a warm welcome with worthwhile experiences. 30mins public transport, 15min drive	Approx \$270++ per night
→ Swissotel	Step into a world of comfort and experience the finest in Swiss hospitality at Swissotel The Stamford, Singapore's Leading Business Hotel and one of the tallest hotels in Southeast Asia. Be perfectly located in the heart of Singapore with the City Hall Mass Rapid Transit (MRT) train station and other major transportation nodes at your doorstep. Enjoy staying in an upscale hotel that boasts a prime location amidst world-class shopping, dining, entertainment and business opportunities. 27mins public transport, 10mins drive	Approx \$330++ per night
→ JW Marriott South Beach	A design-led landmark, JW Marriott Singapore South Beach fuses contemporary architecture with restored heritage in a brilliant show of form and function. JW Marriott is a member of our EHL Privilege Program in Singapore. 30mins public transport , 15mins drive	Approx \$350++ per night
→ St Regis	A member of our EHL Privilege Program in Singapore, The St. Regis is superbly located in the Orchard Road vicinity near the Singapore Botanic Gardens. 11mins walk, 4mins drive	Approx \$370++ per night
→ Four Seasons	An urban sanctuary on Orchard Boulevard, Four Seasons provides a world-class experience with panoramic views, a rooftop pool, Michelin-Star dining and the Four Seasons Spa. Located in the vibrant Orchard Road, it is also close by to the UNESCO Heritage Site - the Singapore Botanic Gardens. The Four Seasons is a member of our EHL Privilege Program in Singapore. 20min walk, 5mins drive	Approx \$360++ per night
→ Capella	At the heart of our Sentosa Island escape are two restored Tanah Merah colonial bungalows dating back to the 1880s, from which the hotel extends into gardens and grounds framed by the sea. Inspired by Tanah Merah's Malay translation red earth, architects Foster + Partners designed this resort in Singapore to sit in harmony with the traditional architecture and the beautiful surrounding environment. 1h 5min public transport, 20mins drive	Approx \$1000++ per night



Night Life



DANCE CLUBS & BARS

- [Attica](#) is famous for its lively parties that attract locals and international visitors alike.
- [Zouk](#) is one of the world's most famous dance clubs, acclaimed by critics and clubbers.
- [Altimate](#) an indoor nightclub with premium audio-visual technology and service Rooftop Bars
- [CÉ LA VI](#), at Marina Bay Sands, offers a panoramic view of the city's skyline.
- [Potato Head Folk](#) features a rooftop bar serving delicious tiki-inspired cocktails.
- [Smoke & Mirrors](#) attracts a nightly office crowd with amazing 360-degree views.
- [1-Altitude](#) is one of the highest rooftop bars in the world, sisterbar to Altimate
- [LeVel33](#) is the world's highest urban craft-breweries, in the Marina Bay Financial Centre Cocktail Bars & Pubs
- [28 HongKong Street](#), serves some of the best cocktails and bar food in town, reservations required.
- [Tippling Club's](#) edible cocktail menu allows you to taste alcoholic gummy bears to choose your cocktail.
- [Orgo](#) is a martini lovers paradise, which sits above the Esplanade theater.
- [Bitters & Love](#) and [Jigger & Pony](#) are both well-loved bars in the Chinatown district
- [Pub crawl tours](#) a fun alternative for a night out with a few friends
- [Jigger & Pony](#) an upscale wine & cocktail bar with a nice bar-food menu



Shopping

Besides eating, shopping is another big passion for Singaporeans and our campus is located just 15 minutes walk/ bus from the number 1 spot: Orchard Road. Since we can't put all the names of great malls and stores in this little guide, we took this list from traveltriangle.com to get you started with the:

TOP 19 BEST SHOPPING PLACES IN SINGAPORE

- **Orchard Road** – Vibrant Shopping
- **Marina Bay** – Shopping Spree Exemplified
- **Chinatown** – Steal Prices
- **Little India** – Sari, Spice, And Everything Nice
- **VivoCity** – Gallery For Lifestyle
- **Haji Lane** – Boutiques Street
- **Clarke Quay** – Shopping For The Fashionistas
- **IMM** – Home And Clothing
- **Bugis Street** – Flea Market
- **Holland Village** – One Stop Shop
- **City Plaza** – Fine Shopping Experience
- **Lucky Plaza** – Shopping Experience Redefined
- **Scape Underground** – Centre For Youth
- **Anchorpoint Shopping Centre** – Affordable Shopping
- **Tanglin Mall Bazaar** – Vintage Accessories And Retro Clothing
- **Mustafa Centre** – Lowest Prices Ever
- **Far East Plaza** – All The Fashion Trends
- **Pasarbella** – Best Farmer's Market
- **The Editor's Market** – Brands On A Budget

For the full version, go here: [traveltriangle](http://traveltriangle.com)



SUPERMARKETS & GROCERIES

There are literally thousands of supermarkets and grocery stores in Singapore, and we just can't cover all of them in this little guidebook. If you want a local point of view, check out this blog summarizing the many different grocery chains and some speciality stores for expats craving a taste of home. Most of the grocery stores offer online ordering and delivery services.

expatliving.sg/supermarkets-in-singapore-all-you-need-to-know-about-food-shopping-prices-and-quality/



PHARMACIES & DRUGSTORES

If you need medicine or personal care/hygiene products, a pharmacy or drugstore is never far away in Singapore. However, you can't buy all types of medicine in any location. Medicine is classified into three categories: Prescription-Only-Medication (POM), Pharmacy-only (P) and General sales or over-the-counter medication (GSL).

Chain pharmacies, like Watsons or Guardian, can be found all over Singapore. They sell beauty and wellness products, as well as health supplements or general sales medicines and they usually have a dedicated pharmacy counter, where other kinds of medication are available.

Hospitals in Singapore all have pharmacies where you can get a prescription filled.

To get urgently-needed medication, it's easiest to go to a 24/7 medical clinic plus pharmacy, such as the Raffles Clinic at Singapore International Airport.

Other medical clinics (often 24/7) can be found easily in neighborhoods and you will usually find one not far away from you.





Recycling

As a leader in sustainable development, Singapore has put a lot of effort into making recycling easy and effective. All you have to do is put a little effort into knowing where to go and what to recycle. Living in apartment-style housing, you will most likely find big blue recycling bins somewhere in or around your building, and they are also located around the campus.

COMMON RECYCLABLES

Always sort these items from your waste bin and place them (clean) in the blue bins around your building or the school site:

- Paper/cardboard
- Glass
- Metals
- Plastic bottles

OTHER RECYCLABLES

There are collection points located in shopping centers and throughout the city for special items such as clothing, electronics, and food waste.

GUIDES & RESOURCES

See the National Environmental Agency's Guidebook of the 3 Rs: Reduce, Re-use, Recycle nea.gov.sg/docs/default-source/resource/a-guide-to-3r-practices-for-households.pdf

Useful recycling tips and tricks from a local: thesmartlocal.com/read/recycling-in-singapore

Singapore's Zero Waste Facebook Group facebook.com/zerowastesg/posts/109231709100279/

Recycling/Collection Points Map nea.gov.sg/our-services/waste-management/3r-programmes-and-resources/recycling-collection-points

Transportation

We will have regular shuttle transportation to/from Newton MRT station, conveniently located pick-up points near accommodation and the campus. On evenings and weekends, you will be free to explore the city, or even visit other countries, using connections in Singapore's excellent public transportation system.



The Mass Rapid Transit (MRT) subway is the best way to get around in Singapore. Maps are available at every station. Fares are based on the distance you travel and usually range from SG\$1 to SG\$2.50 (about \$0.74 to \$1.85). The MRT "ezlink rechargeable card" is a pre-paid card, tap in and out for the MRT and buses and it will deduct from your card balance.



Singapore's bus system has an extensive network of routes covering most places in Singapore and is the most economical way to get around, as well as being one of the most scenic.



Taxis are comfortable and especially handy if you want to go to places not accessible by the bus or MRT. You can hail a taxi by the roadside at most places, or by queuing for one at taxi stands found at most shopping malls, hotels and tourist attractions.

Important: *COVID19 special rules are in place, pay attention to the signs and obey the rules.*



Etiquette: Please do not: speak loudly, play music, spread your legs/show your feet, hog the vertical bar spaces. Please do: wear a mask at all times, be polite/patient when queuing, and get your MRT pass out before you reach the turn-style to avoid becoming a roadblock.



Travel apps

Public transport: Explore Singapore MRT Map, bus@sg and Citymapper
Taxis: Gojek, ComfortDelGro



TIPS FOR SAVING MONEY:

Instead of purchasing single fare tickets for buses or MRT, consider purchasing an EZ-Link rechargeable card for SG\$12 if you're in Singapore for an extended period.



Exploring Asia

One of the best things about living in Singapore is the easy to access, low-cost travel options for exploring Asia. On the weekend, you can visit some of the world's most luxurious resorts, ancient temples, and pristine beaches, which are only a short flight or ferry ride away.





MALAYSIA

Malaysia is just a short bus ride or flight away from Singapore and Johor is just across a bridge, offering low-cost shopping and personal services (haircuts, manicures, etc.). The capital, Kuala Lumpur, features impressive skyscrapers, city markets and the Batu Caves. Penang and Ipoh are two old-school cities with tons of eclectic street food and contemporary art. Langkawi is a secluded tropical island for relaxing on the beach or exploring the jungle.

Discover Malaysia:
malaysia.travel/

THAILAND

Just a short flight away (2-3 hours), Thailand offers a wonderful variety of sites and adventures. Chiang Mai for visiting old temples and biking through the countryside. Krabi and Phuket offer the ultimate weekend getaway with amazing beaches, snorkeling or scuba. Bangkok is one of the world's most-visited cities, attracting many with the crazy night-life, open markets and big-city hustle.

Discover Thailand:
<https://www.tourismthailand.org/>

CAMBODIA

Just a short flight away (~2 hours), Cambodia has some of the world's most impressive temples, such as the ancient Angkor Temples at Siem Reap. The capital, Phnom Penh, is a bustling city hub with many historical sites and tasty street food and tailor shops. Sihanoukville Beaches feature vibrant beach resorts and diving or snorkeling.

Discover Cambodia:
<https://www.tourismcambodia.com/>

VIETNAM

After a quick 2-hour flight, you can find yourself in the capital, Ho Chi Minh, a buzzing city with an eclectic mix of modernity and ancient traditions with many culinary delights. In the north, Hanoi, has an amazing historical old town with quaint shops and modern art culture. And don't forget Hoi An, a colorful city with a picturesque Old Town, beaches, and markets with great street food.

Discover Vietnam:
<https://vietnam.travel/places-to-go/northern-vietnam/ha-noi>

INDONESIA

You don't even have to take a plane to visit the fabulous Bintan and Batam Islands, where luxury resorts and pristine beaches await you for a day of sun, swimming and snorkeling. Bali is just a short flight away, so you can spend a few days in paradise exploring cute towns, admiring volcanos or learning to surf from the white sandy beaches. Jakarta is a mega-metropolis where you can find just about anything in terms of food, shopping and nightlife.

Discover Indonesia:
<https://vietnam.travel/>

CHINA

China is a large and diverse country to explore. From the big cities and countryside experiences of the mainland, to the unique cultures and sites of its outlying islands, you will find experiences for every mood and season.

Mainland:
<https://www.klook.com/coureg/20-mainland-china-things-to-do/>

Hong Kong:
<https://www.discoverhongkong.com/us/index.html>

Macau:
<https://www.macaotourism.gov.mo/en/>

Weather

Due to its Southeast Asian location, close to the equator, Singapore enjoys a tropical/equatorial climate with warm temperatures and high humidity. It doesn't have four clear-cut seasons like summer, spring, autumn and winter. The city gets frequent rain showers that offer a refreshing break from the sun, and these last longer during the monsoon period. Here's what you can expect:

- Thunderstorms occur on 40% of all days
- Average temperature of 25°C-32°C
- Relative humidity of 70% – 80%.
- Usually, April is the warmest month, January is the coolest, and November is the wettest.





Campus Guide

Campus Address

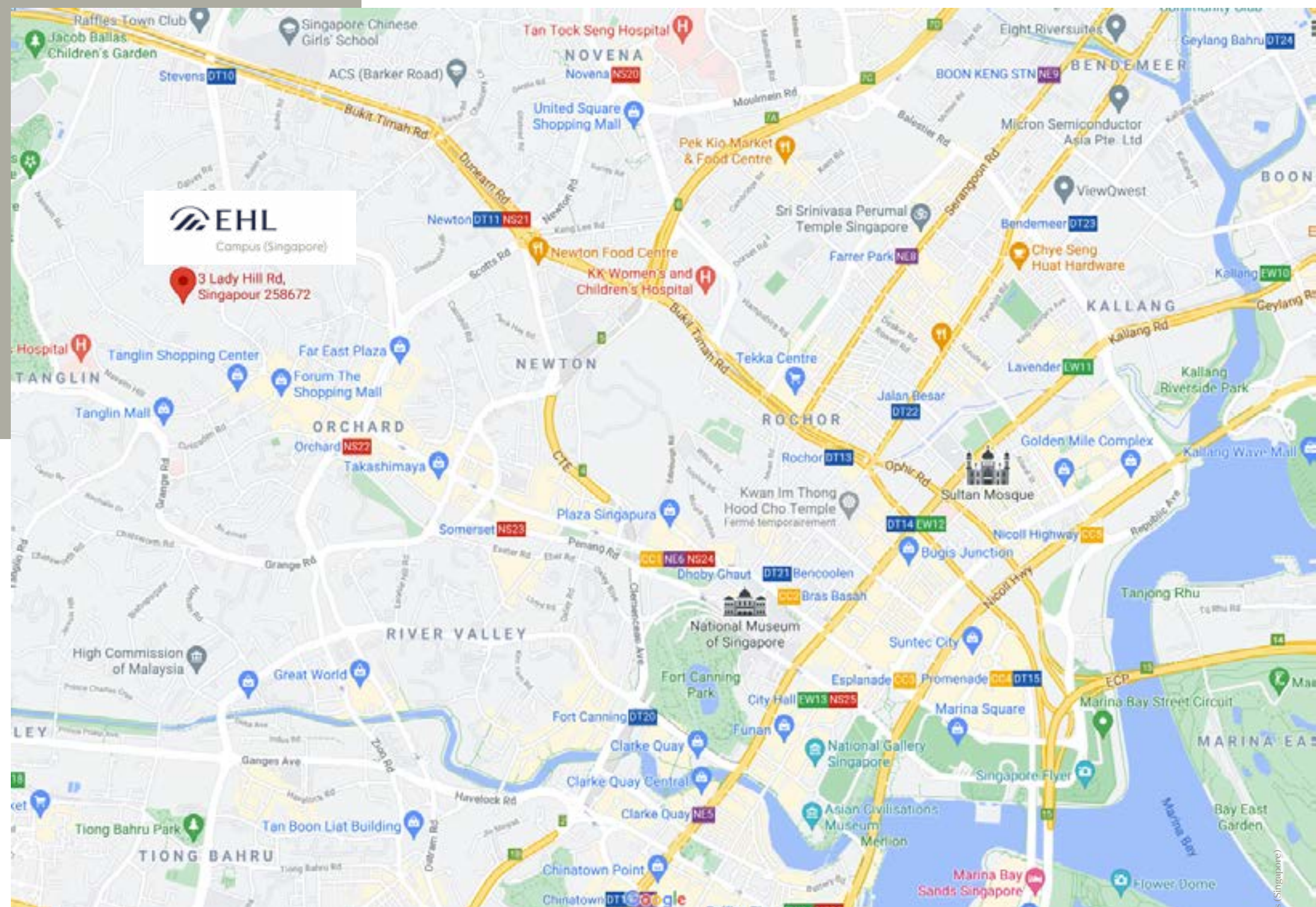
EHL Campus (Singapore)

3 Lady Hill Road, Singapore 258672
Contact: asia-pacific@ehl.ch

Nearest MRT: Newton. The shuttle service is from Newton.

Bus Services: 190, 972, 105, 132,

10 minute walk to campus from bus stop



STUDENT CARD

You will receive a student card at check-in and you should keep it with you at all times. It allows you to enter the buildings, make photocopies, print and more. You can recharge on campus (cash and credit) and through MyEHL (credit). If you lose your card the replacement will be charged.

CONTACTS FOR PARENTS

If your parents have any questions about administrative documents, they can contact Student Affairs. However, as a University, we respect students' right to privacy; therefore, no information can be given to parents concerning issues such as health, attendance, academic performance, etc.



Email: sta@ehl.ch

Food and Beverage On Campus

One of the best things about living in Singapore is the amazingly diverse food offer. While you won't find a full-fledged restaurant on campus, the school has arrangements with external providers to make sure you can easily grab a bite to eat.



ON-SITE:

During weekdays (except Public Holidays), a variety of breakfast and lunch options are available on campus. The catered breakfast and lunch are part of the school fees, so no on-site payment for meals is required.

AT HOME:

In the student apartments, you have the freedom to cook and eat your favorite meals at home with friends from EHL.

OUT ON THE TOWN:

There are plenty of interesting restaurants and food courts all over Singapore, including many near campus on Orchard Road, Singapore's main shopping street.

For more information about the Singapore food scene, here are some suggestions: [Seth Lui](#) and [I eat, I shoot, I post](#) are local well-known food blogs. [Visit Singapore](#) also has lots of foodie information, and you will find many upscale dining options in the [Michelin Guide Singapore](#).

IT Services

Front office IT Support is offered by Student Affairs to all members of the EHL community for general questions and advice concerning IT problems.

The IT services and back office support is provided by EHL IT Department.

For technical issues, requiring on-site intervention, EHL Campus (Singapore) collaborates with an external IT provider.

Students encountering software problems with their own computer shall have limited assistance. No services will be available to students encountering hardware problems with their own computers.



IT EQUIPMENT POLICY

Students must be in possession of a laptop computer throughout their studies and must be connected to the school's network. The student's laptop is integrated into the school IT environment. EHL's IT Department defines the minimal configuration of the laptop and the general regulations for use on campus: see "General IT Conditions" on "myEHL".



PRINTERS

Printers are located throughout the school. You must be connected to the EHL network and the printer drivers must be installed on your computer.



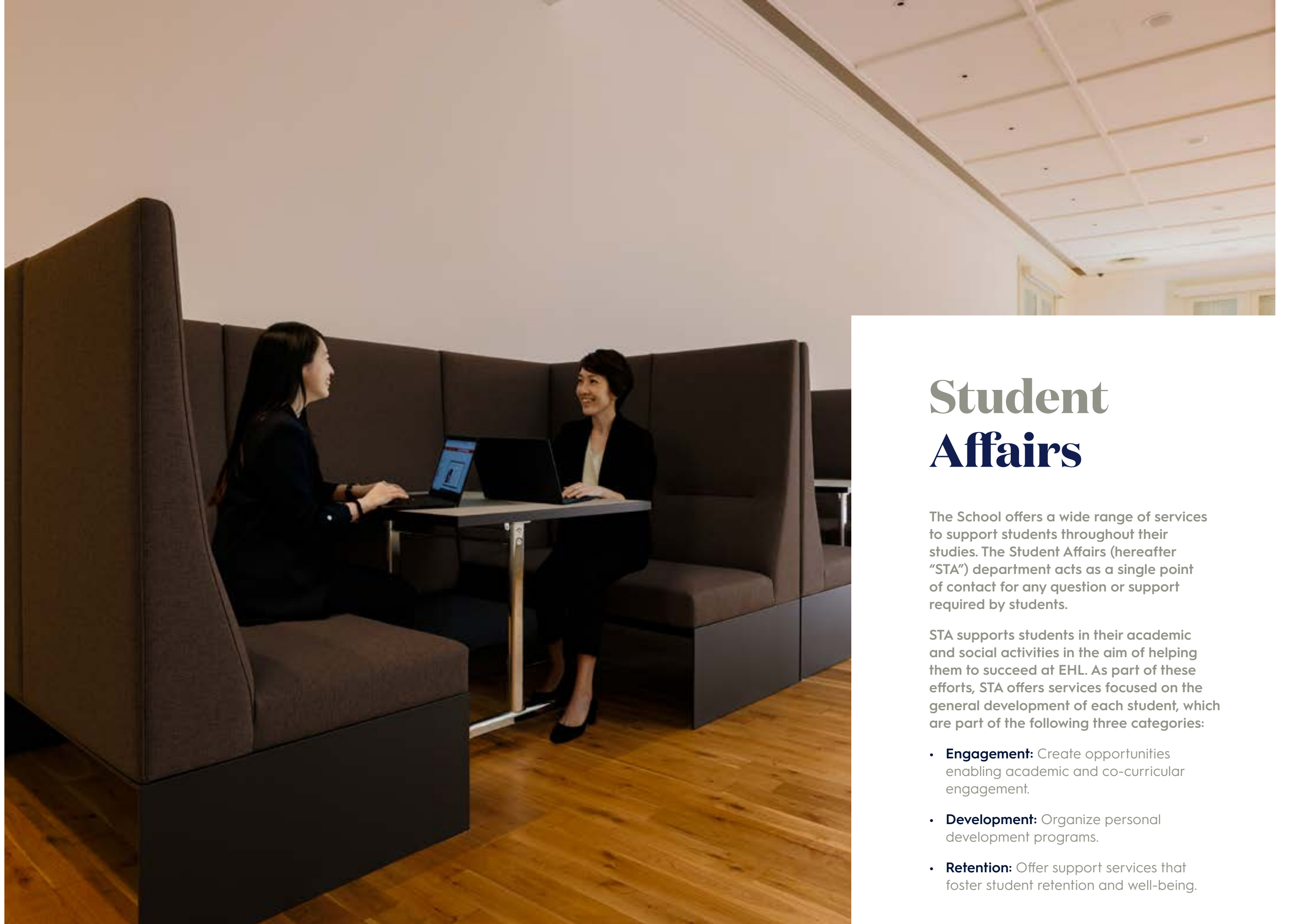
THINK GREEN !

- Print on both sides to save paper and money
- Recycle all paper in the bins next to printers



WIRELESS INTERNET ACCESS

On campus, we have a robust Wi-Fi network for the use of devices for work and leisure. You will receive login information during registration.



Student Affairs

The School offers a wide range of services to support students throughout their studies. The Student Affairs (hereafter “STA”) department acts as a single point of contact for any question or support required by students.

STA supports students in their academic and social activities in the aim of helping them to succeed at EHL. As part of these efforts, STA offers services focused on the general development of each student, which are part of the following three categories:

- **Engagement:** Create opportunities enabling academic and co-curricular engagement.
- **Development:** Organize personal development programs.
- **Retention:** Offer support services that foster student retention and well-being.

Student Health & Wellbeing

External resources are available to students, such as medical services, psychologists, religious representatives or sport providers.

The Student Affairs department advises and orients students towards the appropriate external services collaborating with EHL Campus (Singapore).

INDOORS SPORTS CENTERS:

Singaporeans enjoy a wide variety of indoor sports such as badminton, swimming, basketball, and table tennis. You can also try the unusual experience of skiing in the summer thanks to the several indoor snow parks offering skiing and sledding activities.

TEAM SPORTS:

are organized by EHL student-led sports committees. The teams depend on students' interest, for example: watersports, dragon boating, golf, badminton, etc.

GYMS & FITNESS CLASSES:

The campus has an agreement with Fitness First providing access to well located fitness centers with training equipment and group exercise classes, cycling studios and swimming pools. Additional activities might be offered

such as yoga classes on campus, boxing and martial arts clubs and an indoor rock-climbing center

OUTDOORS:

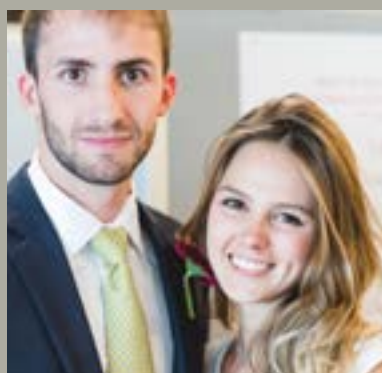
Well maintained trails and parks are spread throughout the city for walking, hiking, jogging, roller-blading and cycling tours. The ocean front has multiple beaches and water parks where you can play volleyball, or practice dragon boating, water-ski, surfing or wakeboarding.

BEST LOVED:

Singaporeans love football! Rugby and cricket are also quite popular. Visit the Singapore Football Club for more information about amateur teams and competitions.

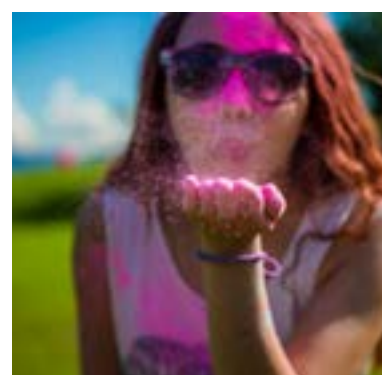
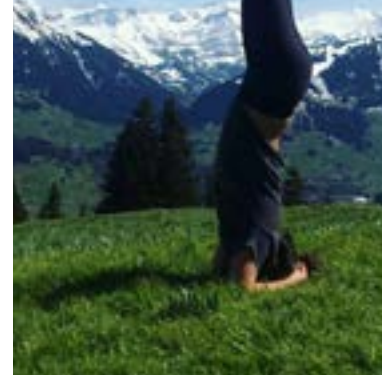
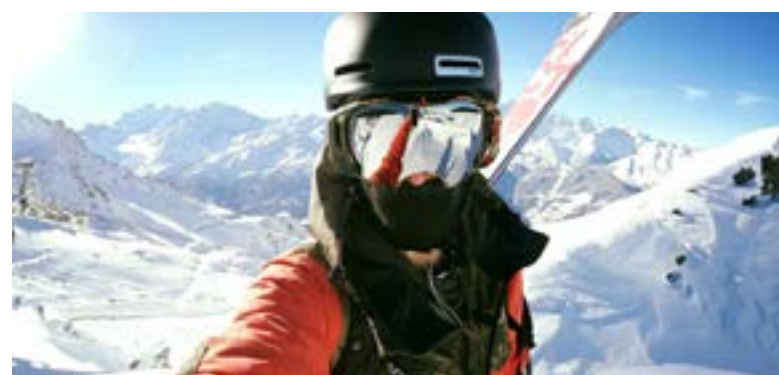
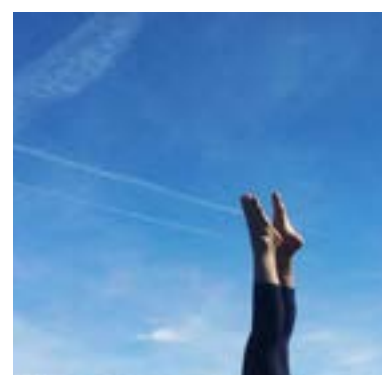
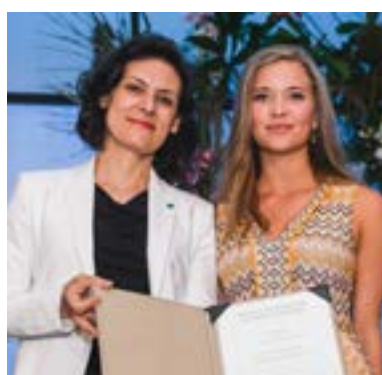
singaporefootballclub.com





Student Committees

EHL students committees are student-run and supported by Student Affairs. You can join one, or form a new one with like minded friends. It may also be possible to collaborate with student committees from the Lausanne or Passugg campuses. Detailed information will be shared during the Orientation Week!





Career Development Services

Job platform jobs.ehl.ch is where students and alumni can find job or internship offers.

- More than 5500 companies are recruiting on the platform
- Average 700+ full time positions
- Average 2 internship positions offered per student Career Fair
- On-site and Virtual Career Fairs, mid-March and mid-October
- Over 140 companies participate in recruitment
- 1-day event with the unique opportunity to interact with company representatives
- Open only to EHL Students and Alumni

Career Center

- Advising and supporting students for their compulsory internships
- Career Counselling for all current students and recent graduates
- Link between the students and the job market, in particular through the Career Fairs
- Workshops and presentations:
 - Interviews preparation
 - Job Platform and Career Fair
 - CV photos shooting with the committee "EHL Photos"



TIPS FROM EHL STUDENTS

- Work on your CV before you start at EHL
- Have a list of questions ready for your meetings with the internship advisor
- Do some research about hospitality departments, jobs and companies before you arrive, so you can search for an internship that suits your expectations.



The EHL Family



ERIC PIATTI - 1992
GM, Dusit Thani Laguna Singapore



STEVE KNABL - 1999
COO and Managing Partner,
Swiss-Asia Financial Services



YANNICK DEDIGAMA - 2010
Chief Executive Officer & Vision
Officer, The Ripple Club



ALEXANDRA STETTLER - 2015
Client Coverage & Business
Development - ESG Specialist, IS&S
Wealth Funds, Credit Suisse



BALTHAZAR PELLISSIER - 2001
Director F&B Operations, COMO Group



KEVIN J. ABRAMOWICZ - 2005
VP Operations, COMO Hotels & Resorts



HUILIN QUEK - 2004
CEO, Q Industries



MARCO CHANNITANDA - 2019
Head of Operations & Digital Marketing,
Indraco Group



ALEXANDRE FRERI - 2002
General Manager Southeast Asia,
JV & Emerging Markets, Diageo

The EHL Family

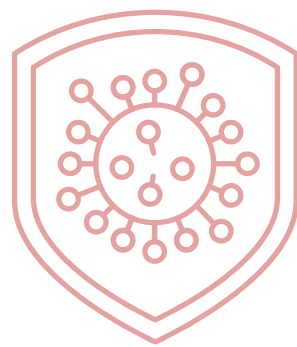
EHL's alumni department constantly nurtures the connections between EHL alumni and students. While you are studying in Singapore, you may have the chance to meet some prominent alumni who are working in the region. Here are a few excellent examples:



**We look forward to
seeing you soon!**

Your team at EHL Campus (Singapore).

COVID 19 Measures



COVID 19

Situation & Regulations in Singapore

Singapore has one of the world's lowest rates of COVID-19 contagion and it continually ranks among the top countries to be in during this pandemic. This excellent management of the COVID-19 pandemic is due to rigorous regulations for behavior, travel, testing and contact tracing.

Please visit the following links **at least 4 weeks before** your planned travel to Singapore, to inform yourself of the procedures in place at the time.

- Singapore Safe Travel Guidelines for Student Pass holders (pre- and post-arrival procedures)
- <https://safetravel.ica.gov.sg/>
- Ministry Of Health (MOH) website (daily updates on the situation and useful links)
- <https://www.moh.gov.sg/covid-19>
- MOH "How to Stay Safe" Infographics (advice for different settings)
- <https://www.moh.gov.sg/covid-19/resources>



Protection & Care for the EHL Community

- In order to maintain appropriate distancing measures on site, only students will be admitted on campus during Orientation Week. Parents and loved ones will be able to participate in this special day remotely and more details will be shared in due course.
- You are highly encourage to perform a ART to ensure you are negative for Covid-19 before the first of orientation

Questions? Contact Student Affairs for Assistance

→ sta.sg@ehl.ch